

Customized Fumigation.



Optimized Results.

PRECISION
FUMIGATION™

 Dow AgroSciences

ProFume*

Gas Fumigant

 Dow AgroSciences

Dow AgroSciences LLC
9330 Zionsville Road
Indianapolis, IN 46268-1054
www.ProFume.com

®™* Trademark of Dow AgroSciences LLC
ProFume is a federally Restricted Use Pesticide.
Always read and follow label directions.

526-C2-27-04

U01-129-011 (1/05) BR
010-70367

PRECISION
FUMIGATION™

 Dow AgroSciences

ProFume*

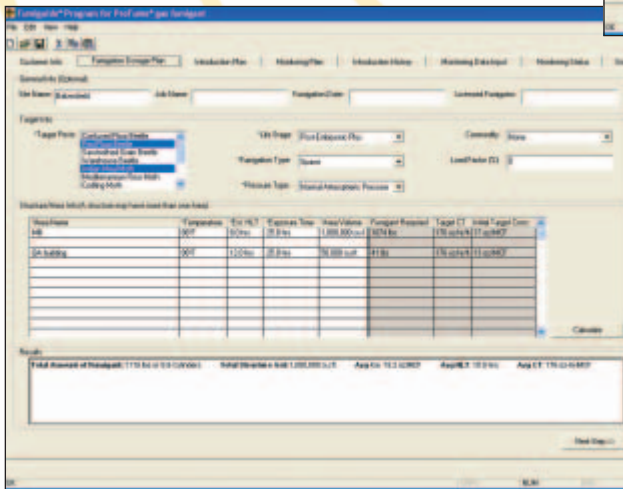
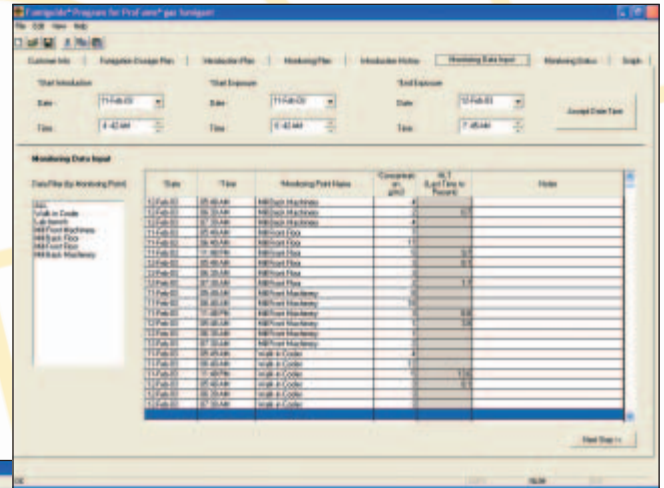
Gas Fumigant

Customizing a fumigation blueprint.

The Fumiguide™ program for ProFume® gas fumigant takes the mystery out of the fumigation process. This innovative computer-based program provides a customized fumigation blueprint for every job. Taking into account necessary variables within a facility, it calculates the optimal dosage so the fumigator knows when, where and how much fumigant is needed.

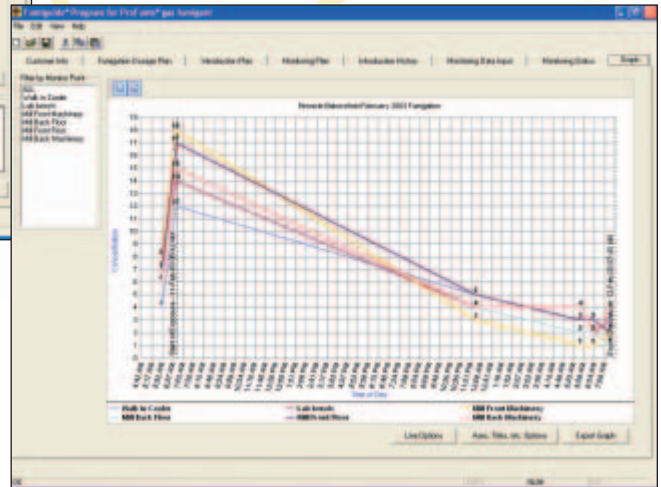
Before fumigation begins, fumigators can even use the Fumiguide to run “what if” scenarios to determine the best techniques to meet the facility’s goals. Plus, fumigators have complete control throughout the entire fumigation, with the flexibility to make adjustments along the way to ensure effective results and time- and money-saving efficiencies.

The Fumiguide utilizes monitoring data collected throughout the fumigation. Using this information, cost-savings adjustments can be made to ensure optimal results are met without wasting gas.



When the fumigation is complete, the Fumiguide provides a detailed report of the job to confirm a successful fumigation. This report can be used to refine and improve future fumigations at the facility, thus potentially increasing savings and efficacy over time.

At each job, the target pest, exposure time, Half-Loss Time, temperature, commodity and site description are inputted into the Fumiguide. It then calculates a dosage that is customized for that specific facility and its environment.



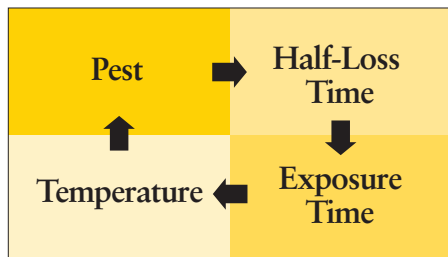
Get optimal results and maximum flexibility.

No two fumigations are alike. Even fumigating the same site on two different days isn't the same. Every facility contains its own unique conditions that can greatly affect the outcome of the fumigation. That's why ProFume® gas fumigant is administered using Precision Fumigation™ tools and techniques. This innovative decision-making process gives fumigators the power to plan and conduct successful Integrated Pest Management (IPM) programs with unprecedented customization and flexibility.

With Precision Fumigation, fumigators are able to develop a customized fumigation blueprint for every job. The result: A precise dosage of ProFume gas fumigant that ensures optimal and efficient results *and* a flexible plan that ensures the least disruptions to the operation.

The more you know the better.

An optimal fumigant dosage controls target pests without wasting gas. It's a combination of effectiveness and efficiency. To determine this dosage, there are four interrelated factors that are crucial to understand in every job. These include:



Pest: Different pest species and life stages require different dosages for effective control. Identifying pests in the facility is the first step in determining optimal fumigant dosage.

Half-Loss Time: This measurement of how well an area holds fumigant is extremely important in achieving effective pest control. The higher the Half-Loss Time, the lesser the amount of fumigant needed to accumulate target dosage. Therefore, facilities with higher Half-Loss Times can save money by using less gas over a longer time period, or save time by shortening the fumigation time with the original dosage.

Exposure Time: Customizing exposure times leads to the ultimate efficiency. In fact, increasing the exposure period is one of the most cost-effective fumigation practices. Doubling exposure time in a well-sealed structure can decrease gas needed by up to 50 percent.

Temperature: Higher temperatures increase insect metabolism, which greatly improves the efficacy of ProFume. Simply increasing the temperature in the facility by only a few degrees can substantially decrease the amount of fumigant needed.

Understanding these variables is just the beginning. Precision Fumigation tools and techniques give fumigators powerful flexibility to modify these four interrelated factors in order to meet each facility's goals. Whether a facility needs less downtime or less fumigant cost, fumigators have the flexibility to optimize customized dosage, application rates and timing for every job.

Count on ProFume® to get the job done!

ProFume® gas fumigant effectively controls all life stages of the insects and rodents that may infest facilities and commodities. This odorless, colorless gas promptly penetrates the area where the pests are without damaging the commodity, equipment, electronics or buildings.

Applying ProFume using Precision Fumigation™ tools and techniques allows fumigators to develop a customized fumigation blueprint for every job. Our innovative decision-making process assures millers, applicators and processors optimal and efficient results.

ProFume is brought to you by Dow AgroSciences, the trusted pest management leader.

Optimize your results with ProFume gas fumigant and Precision Fumigation™ tools and techniques. Visit www.ProFume.com to learn more.

People are saying great things about ProFume.

“ProFume promises to be a wonderful new fumigant for the milling and processing industry. It will be unique in the way variables can be managed with its Fumiguide program – a software program developed by Dow (AgroSciences) to ensure precise, flexible fumigations. ProFume appears to be the closest thing to a direct replacement for methyl bromide for structural fumigations.”

– As quoted in, World Grain, “A Mill’s Sanitation Toolbox,” April 2004



PRECISION
FUMIGATION™